

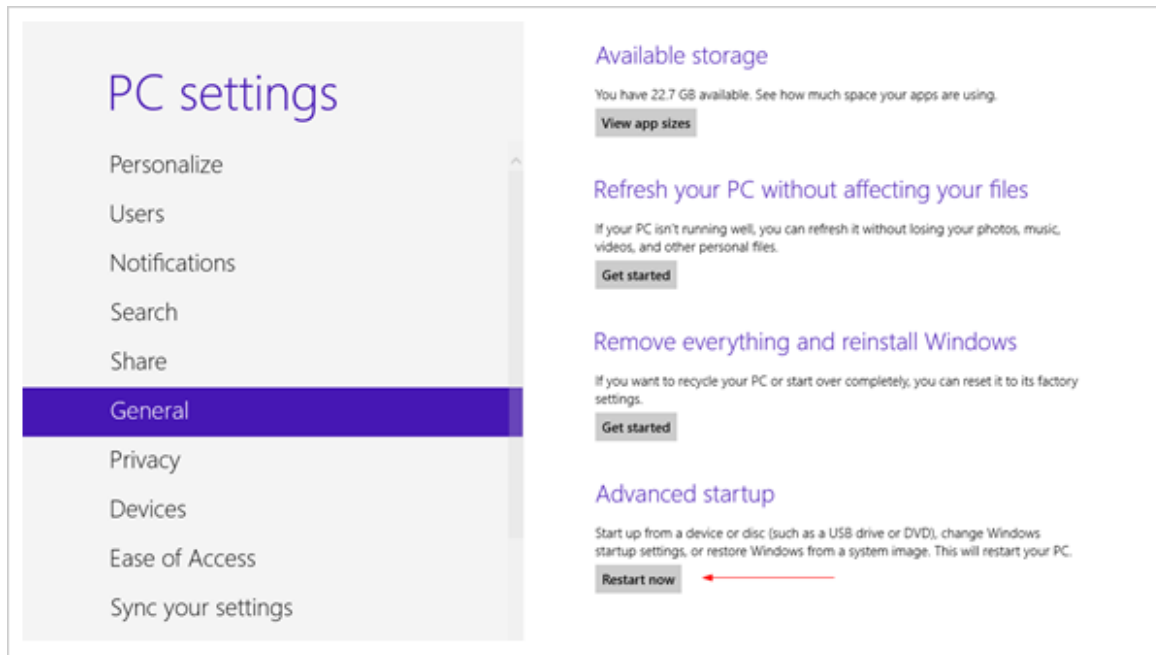
Drivers installation under Windows 8 instructions

Using Windows XP/7/Vista drivers under Windows 8

Current device drivers can be installed in Windows 8 OS after disabling driver signature enforcement in Windows startup settings. To do so, follow steps described below

1. First, press **win + I** to launch the charm bar, and click **Change PC Settings** at the bottom.
2. Then, go to **General**, and scroll to the bottom of the page, click **Restart Now** button under **Advanced Startup** section (*Illustration 1*). Remember to save all your work first before clicking it.
3. The computer reboots to a startup menu, in which click **Troubleshoot** (*Illustration 2*).
4. And click **Advanced Options** at next screen (*Illustration 3*).
5. Choose **Startup Settings** next (*Illustration 4*).
6. And click **Restart** button (*Illustration 5*).
7. The computer reboots and prompts another menu to choose. One of the items is to **Disable driver signature enforcement**. Press number **7** or **F7** to continue booting to Windows 8 with digital sign enforcement disabled (*Illustration 6*).
8. Then install GH300 drivers, and during instalation Windows Security warning window will offer to install this driver anyway (*Illustration 7*), pick that option to install driver.
9. (*Illustration 8*).

Illustration 1:



IMPORTANT!!!

Remember to save all your work first before clicking it.

Illustration 2:

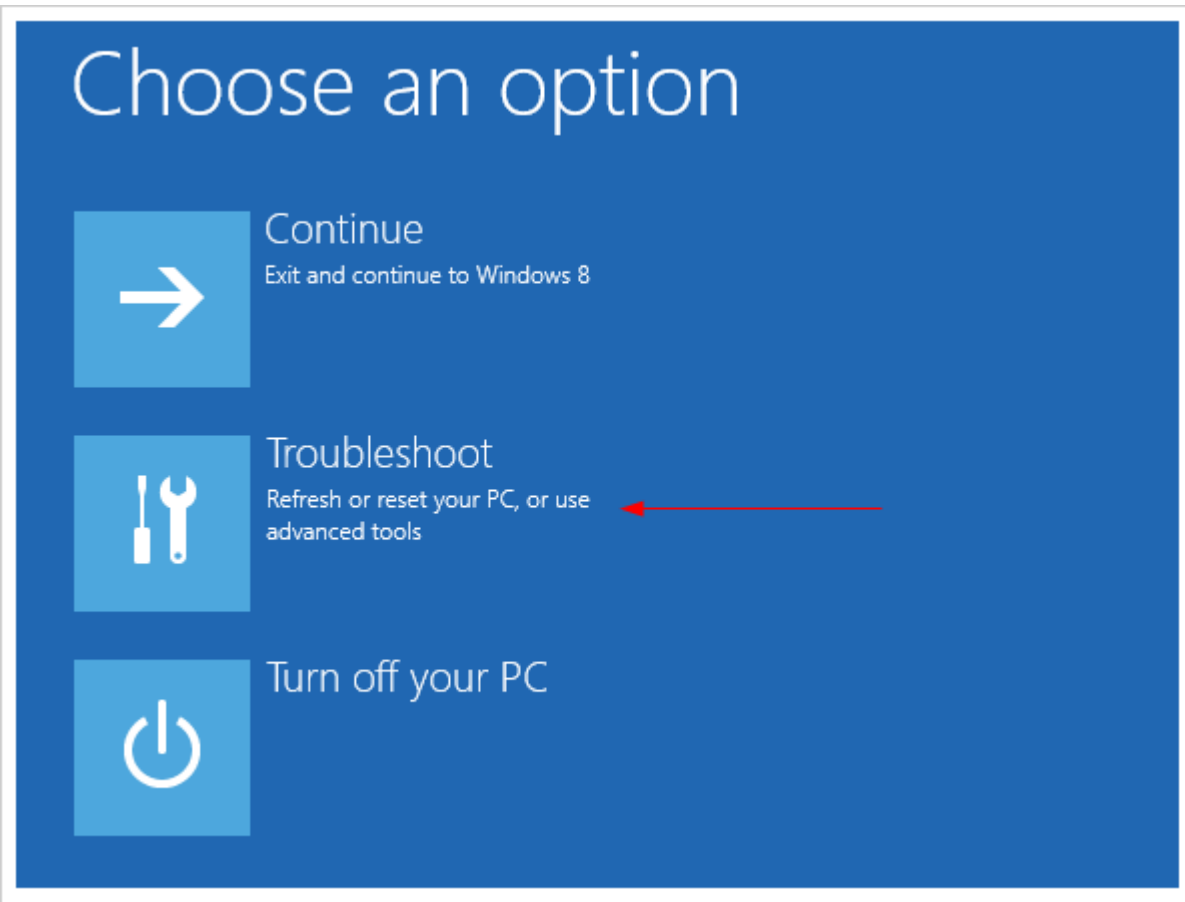


Illustration 3:

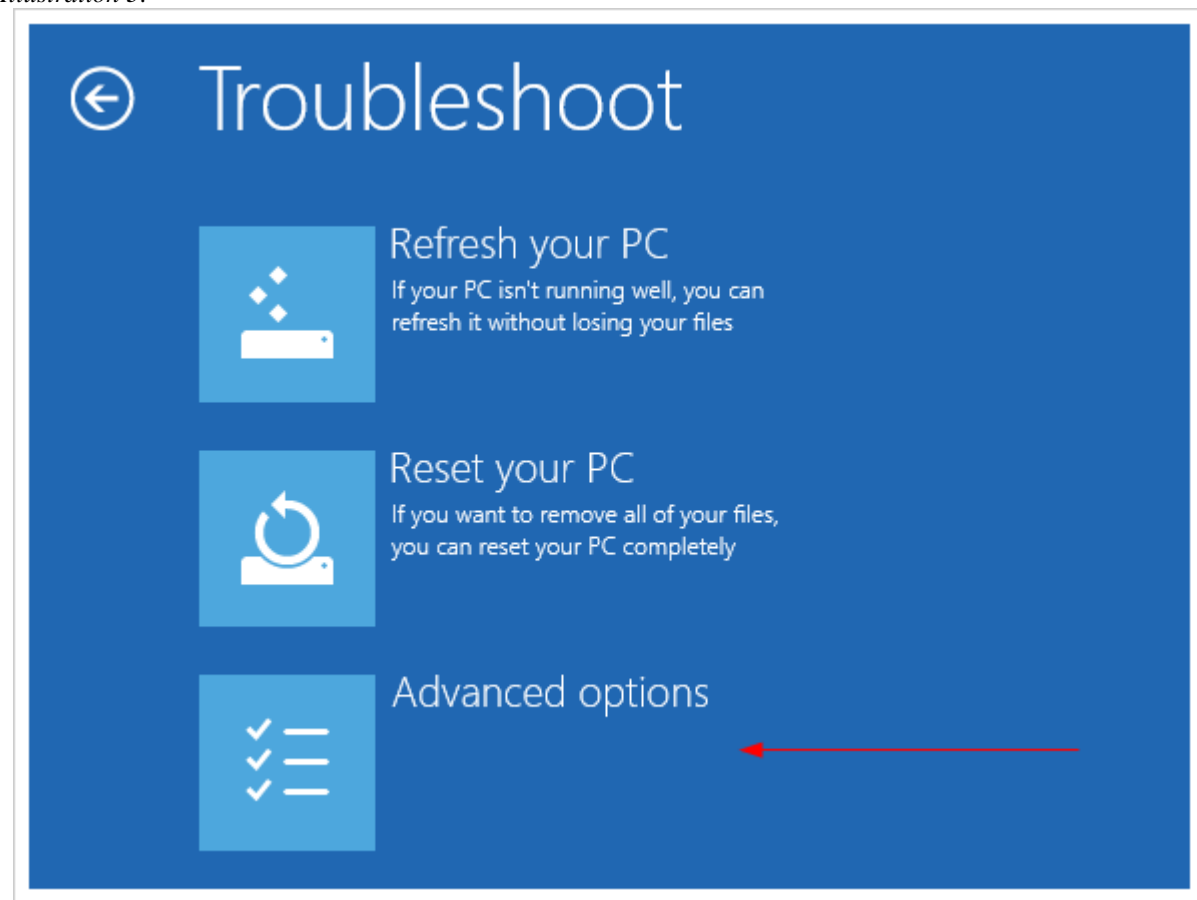


Illustration 4:

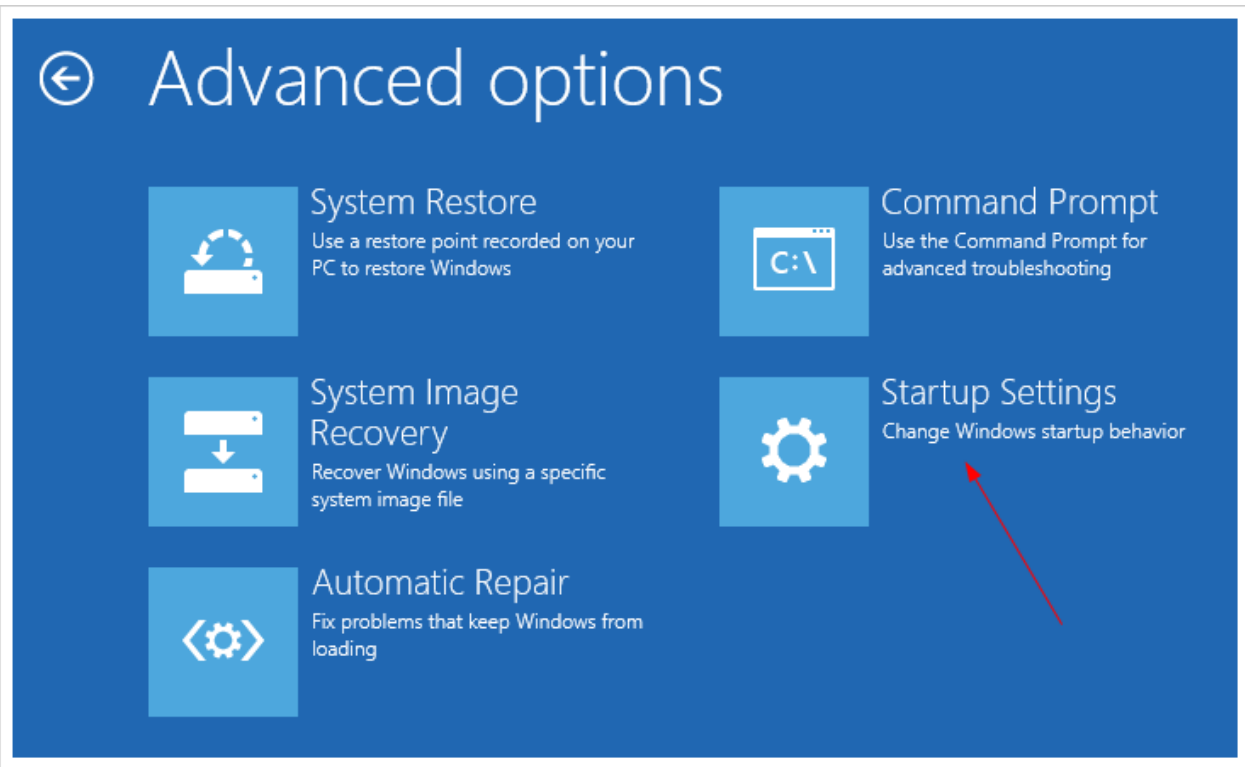


Illustration 5:

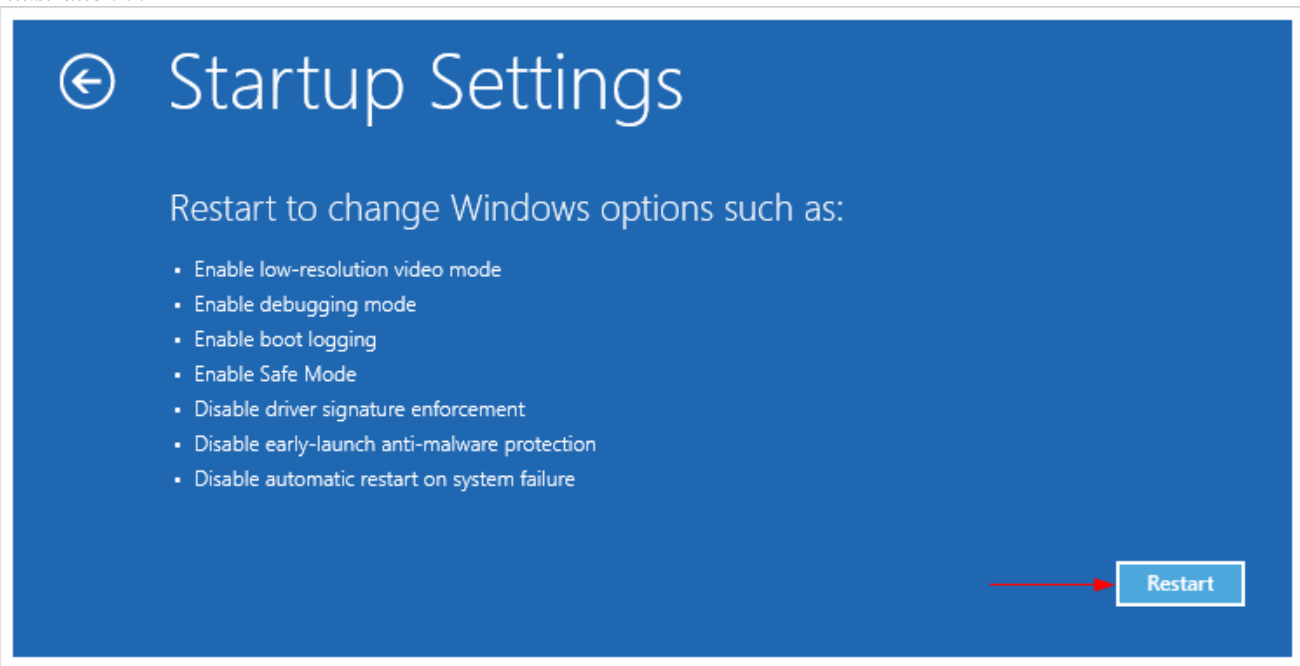


Illustration 6:

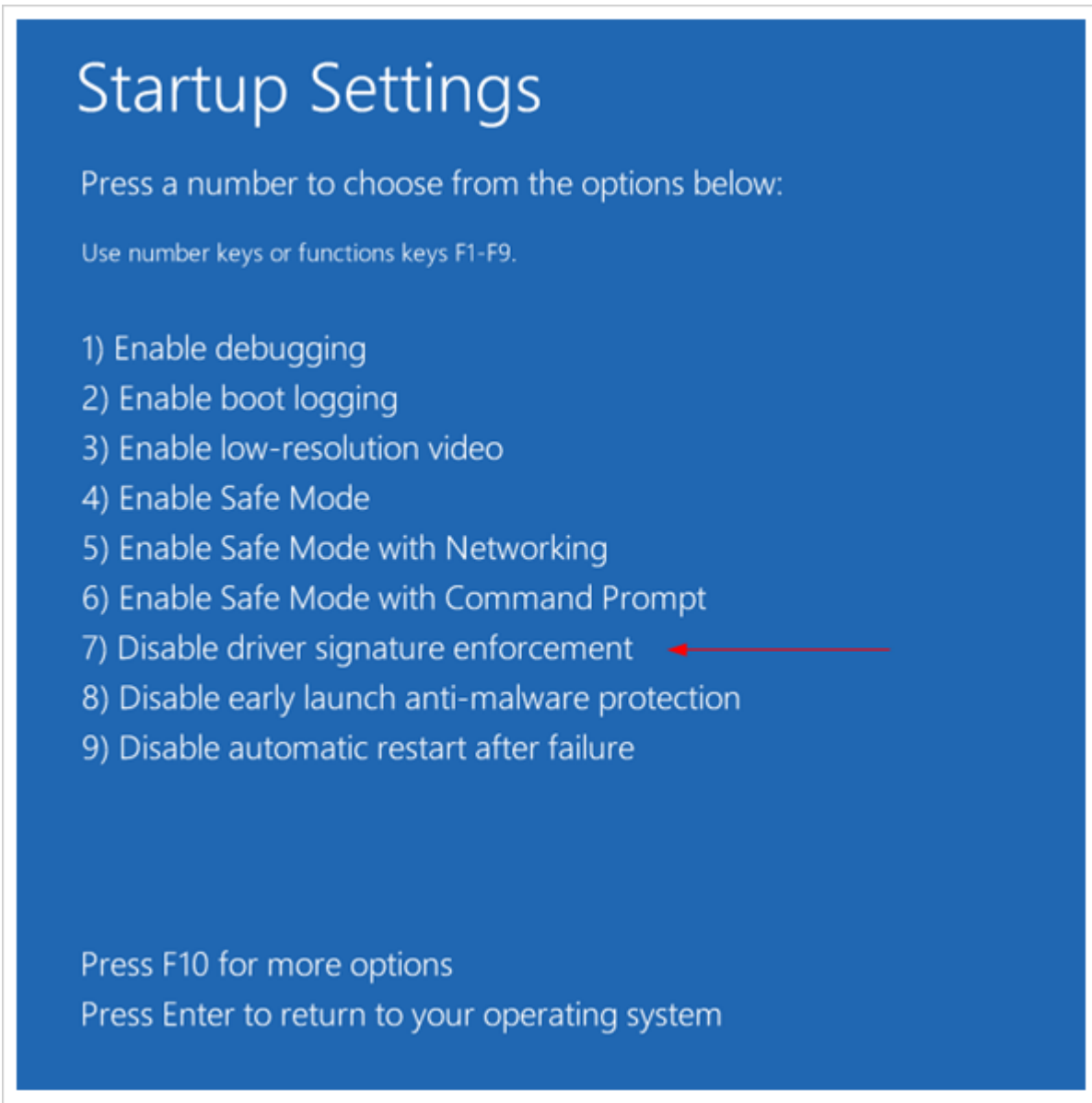


Illustration 7:

